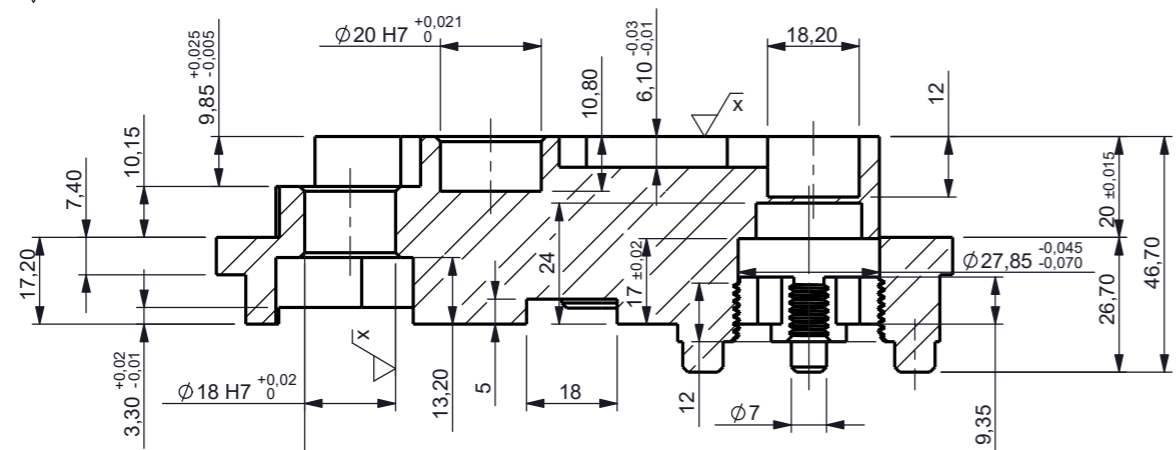
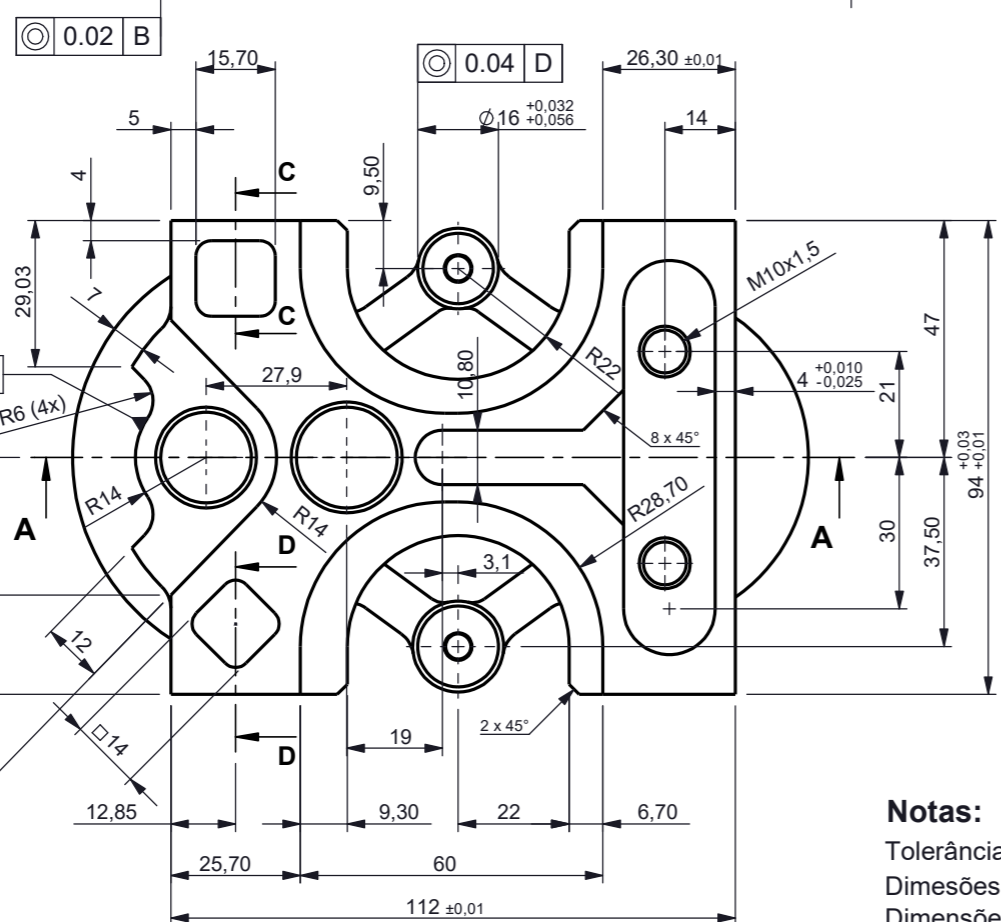


1

1,6

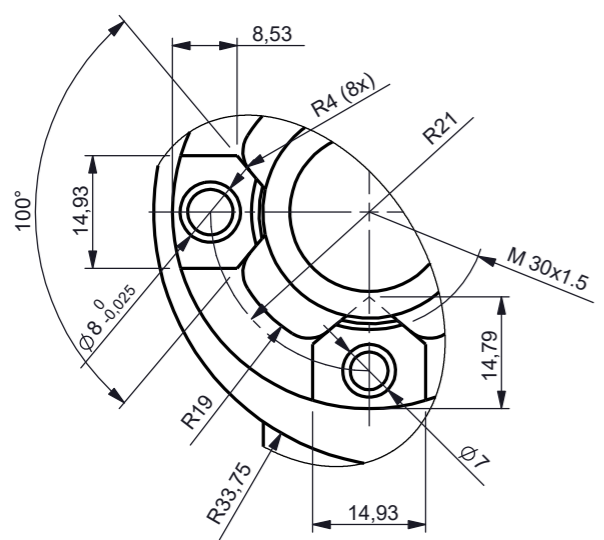


SEÇÃO A-A

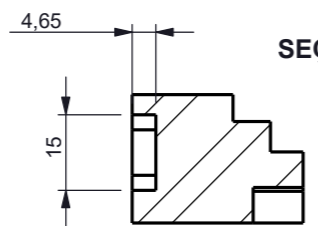


DETALHE F

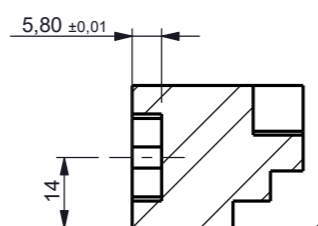
ESCALA 1:1



SEÇÃO C-C

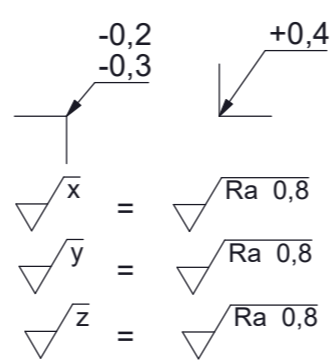


SEÇÃO D-D

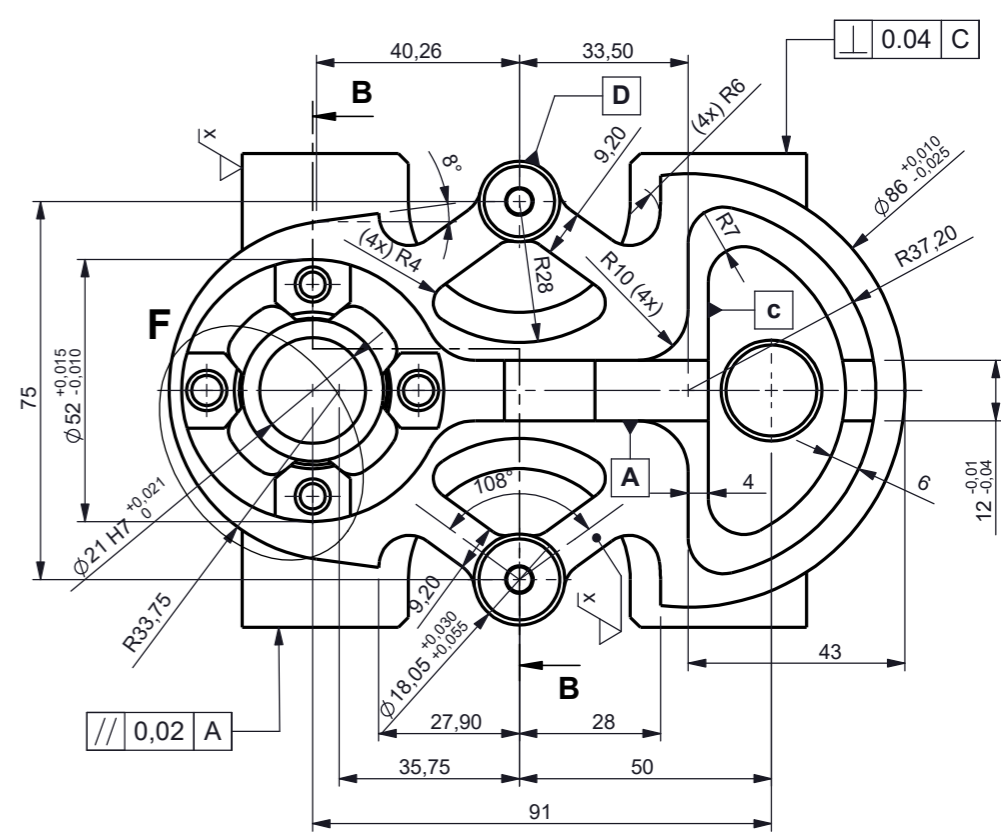
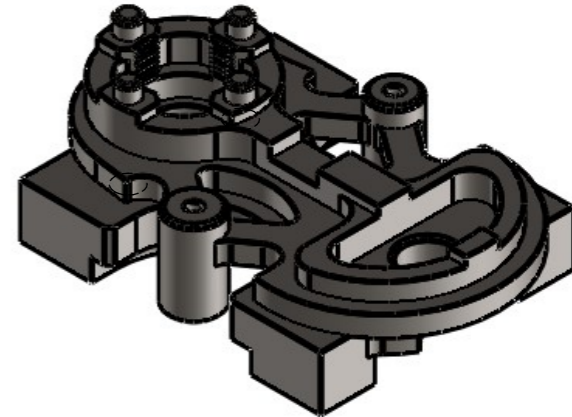
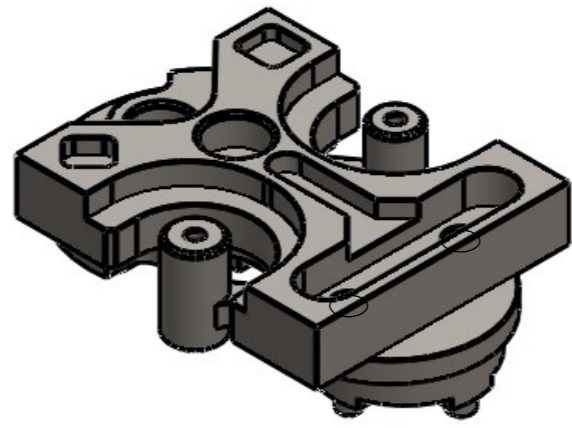
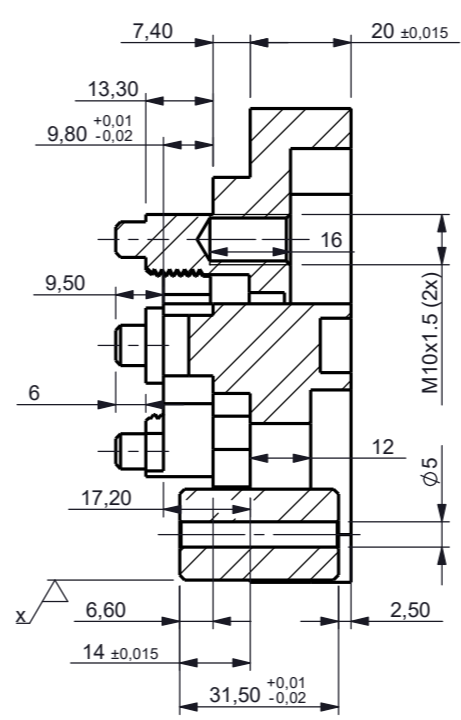


Notas:

Tolerâncias Gerais:
Dimensões primárias 0,02 a 0,04 IT>=7;
Dimensões secundárias: +/- 0,04mm;
Tolerâncias geométrica conforme norma DIN 1101;
Qualidade de superfície conforme norma DIN ISO 1302;
Profundidade de Rosca: -0 / +2 mm;
Profundidade de Furo: -0 / +0,5 mm.
Cantos conforme norma:
DIN ISO 13715



SEÇÃO B-B



Diâmetro médio de Rosca (d2):

M30 x 1,5 mm
MAX.: Ø 28,99
MIN.: Ø 28,94

DIMENSÕES E AJUSTES (NBR 6158)

DIM	MAX	MIN
18 H7	18,02	18,00
20 H7	20,021	20,000
21 H7	21,021	21,000

1	1	Tarefa 2	CK 45 150x100x50	
Nº	QTD.	DENOMINAÇÃO	MATERIAL / DESCRIÇÃO	
			Ocupação #07 - Fresagem CNC	
Projeto:		Local:		Unidade: mm
Sinumerik -2		MG		Escala: 1 : 1.5
Nome:		Folha: 1		Data: